

Contents

All parts of this documentation, the data as well as the software are protected by copyright laws. All rights reserved.

Any duplication or distribution, complete or partial, is prohibited.

No part of the documentation or software may be copied, transferred, reproduced, translated, stored on other electronic media or converted into machine-readable form.

The licensors' written consent is compulsory.

All data and information contained in the software program and the manual have been checked and tested extensively.

Still, the licensors do not guarantee 100% error-free operation or correctness of the content provided.

The licensors are not liable for any technical errors or false information or any consequences resulting from them.

The licensors are not liable for any technical errors or false information or any consequences resulting from them.

Any claims whatsoever are excluded.

We are grateful for any information on errors and suggestions for improvement.

This product's licensee purchases a single license for one counsellor.

All rights are the property of the respective author(s) and/or licensor(s).

Installing the software

Please open the program's ZIP folder after downloading it from the server.

Alternatively, you can insert the CD-ROM into your CD-ROM/DVD drive.

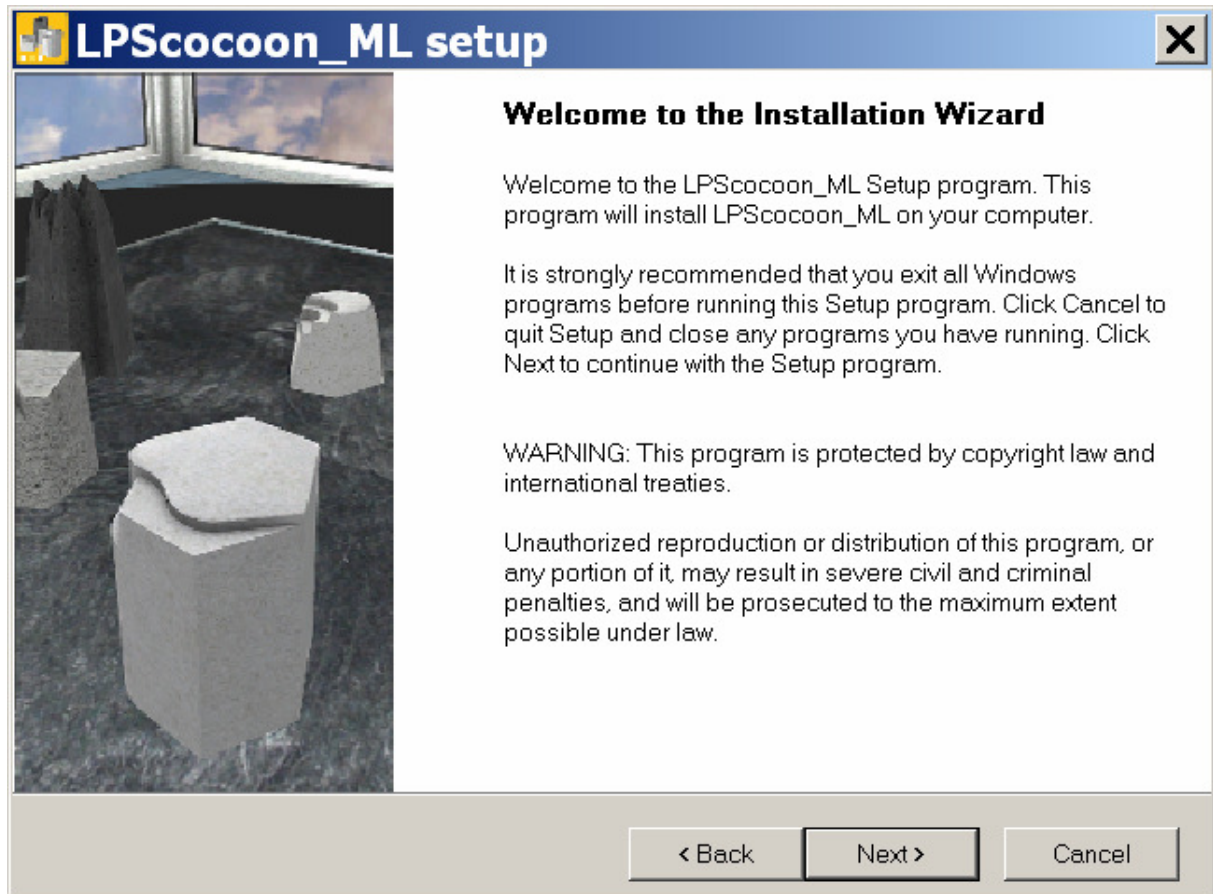
The installation should now start automatically.

If it doesn't, please open My Computer and double-click the icon of the CD-ROM/DVD drive you inserted the disc into. Please open the program's ZIP folder.

Start the program "setup.exe" by double-clicking the following icon:



Now the installation wizard will welcome you.



Please follow the on-screen instructions now.

To proceed with the installation, click on "Next". To abort the installation, click on "Cancel".

You can start the program as soon as the installation is complete.

Starting the program

Double-click the program's icon on your desktop to start the application.



Alternatively, you can click the program's icon, which will be created at "Start/All Programs/LPScocoon".

Important:

The program won't start unless DirectX 9c has been installed on your computer for running 3D applications (see DirectX 9c installation).

For your first online session, please start the program in windowed mode (see Settings). Your firewall and maybe your router will ask you now, whether LPScocoon may connect to the internet. Please allow LPScocoon to establish such a connection.

Uninstalling the software

Click on the icon "Uninstall LPScocoon" in the program's folder. You can find it at "Start/All Programs/LPScocoon".

Installing and checking DirectX 9c

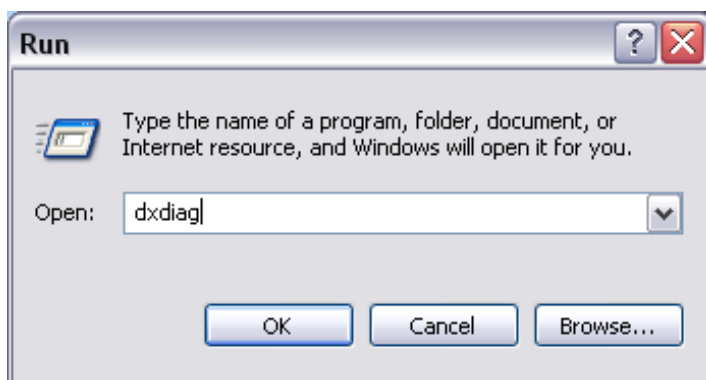
For the software to run smoothly, you need to have the correct update of DirectX 9c installed.

Important:

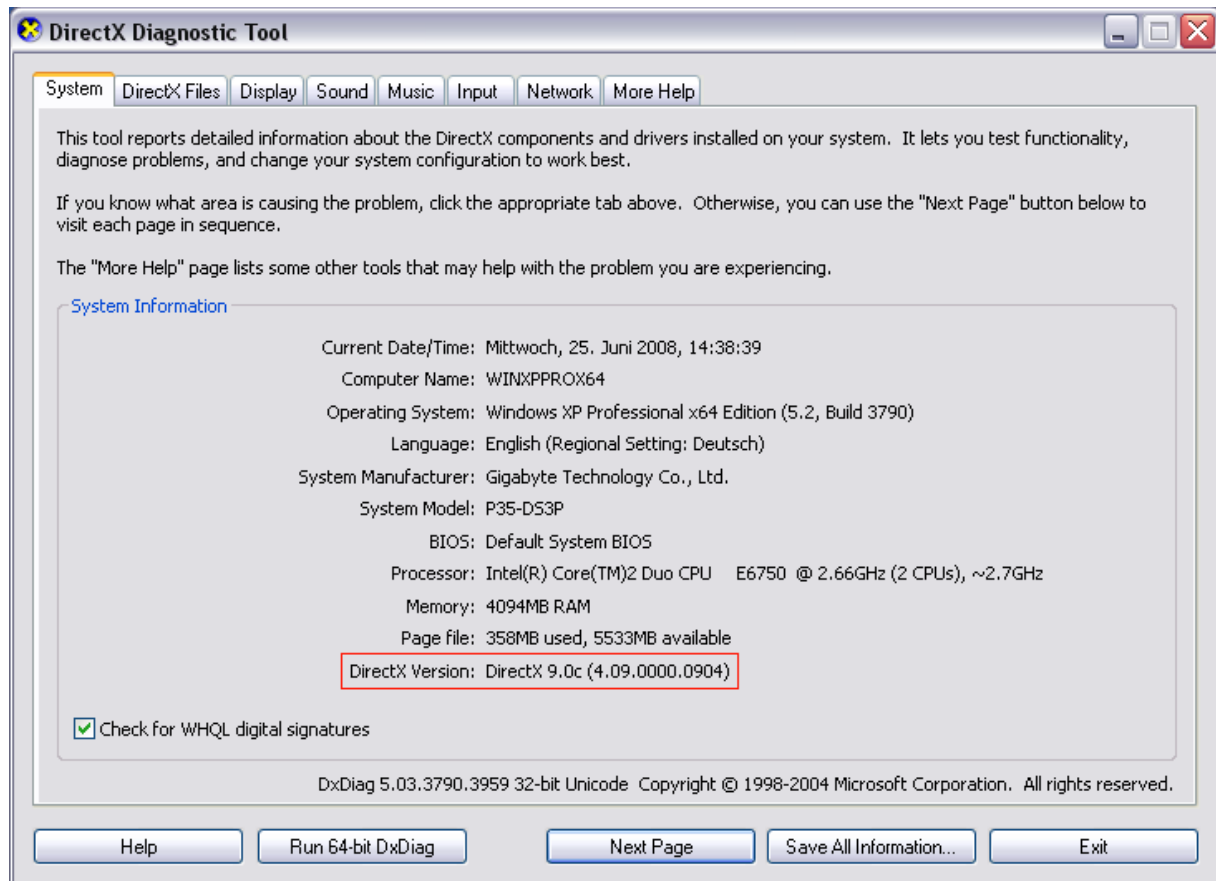
Please install DirectX and download an updated version of DirectX 9c from the Microsoft website.

(<https://www.microsoft.com/en-US/download/details.aspx?id=34429>)

To check whether you already have a current version of DirectX 9 installed on your computer, please open the "Start" menu and click on "Run...", then enter "dxdiag" (without inverted commas).

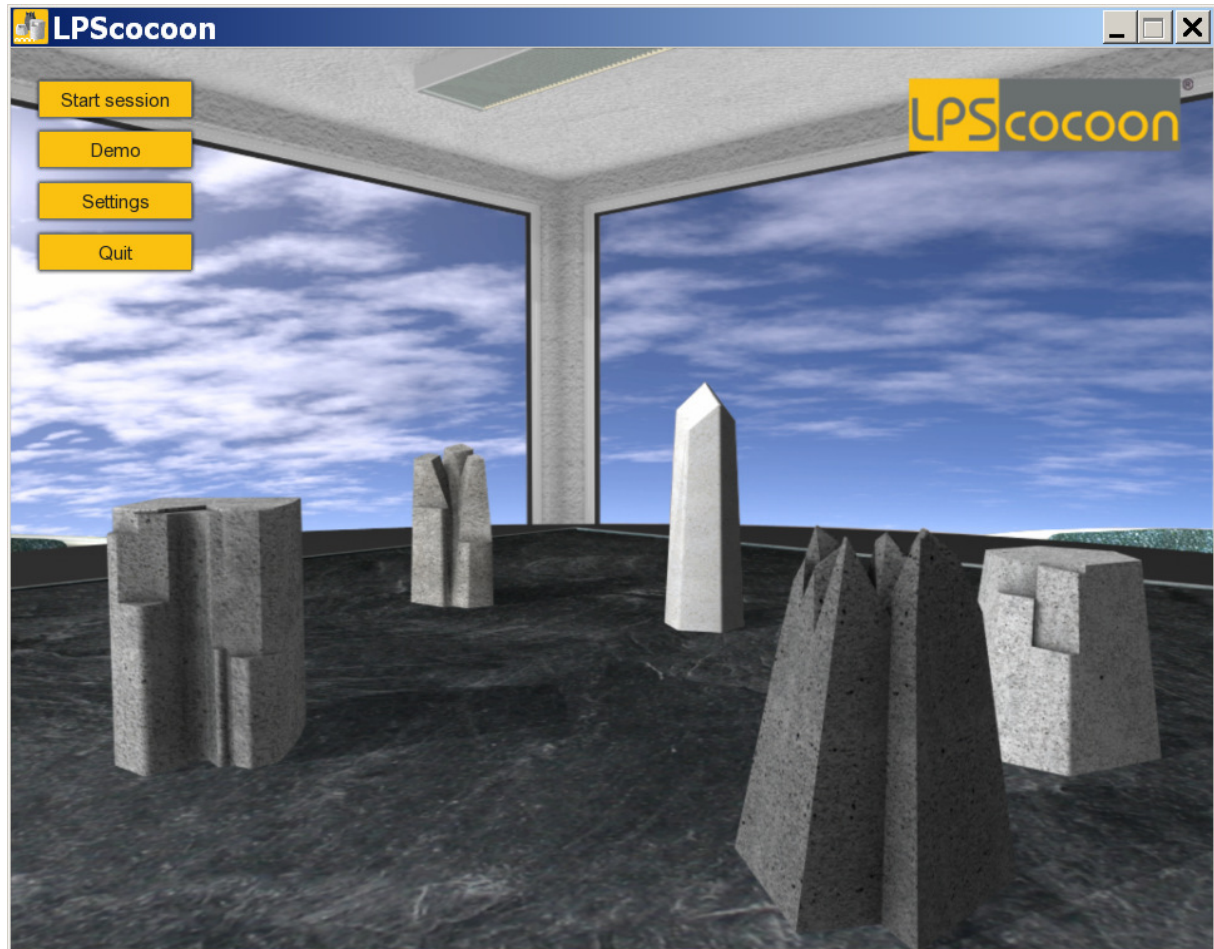


Click on the "OK" button to start the DirectX diagnosis.



Here you can see whether you have DirectX 9.0c installed.

Main menu



You can access the most important features of the program via the main menu.

To start an online session, click the button "Start session". You need a session code to run an online session.

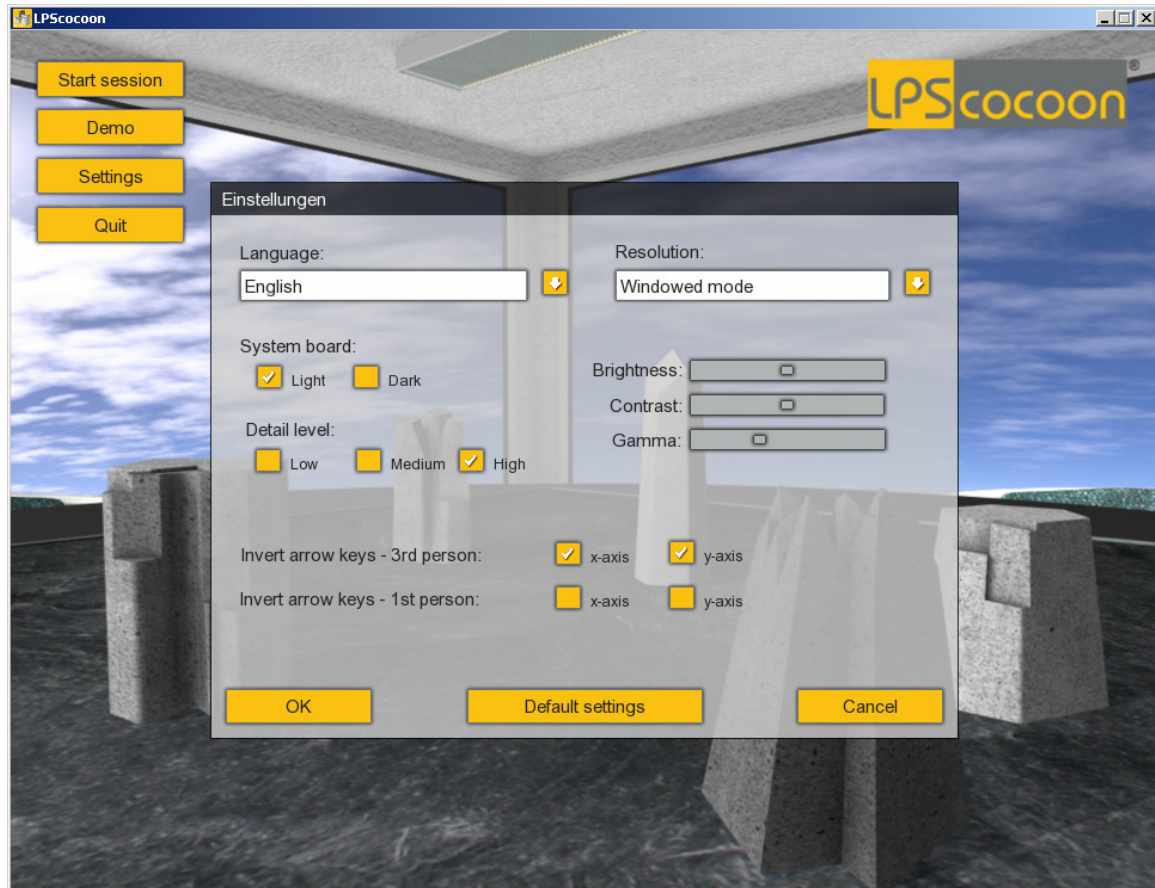
You can acquaint yourself with the program's session controls by clicking the "Demo" button.

"Demo" sessions end automatically after 15 minutes. You will then return to the main menu.

Click the "Settings" button to open the settings window and customize the program to your preferences.

Click the "Quit" button to exit and close the program.

Settings



In the "Settings" menu you can choose your preferred language, either a light or dark system board, customize detail settings and screen resolution or change general display options.

The detail settings help you customizing the program to meet your computer's performance.

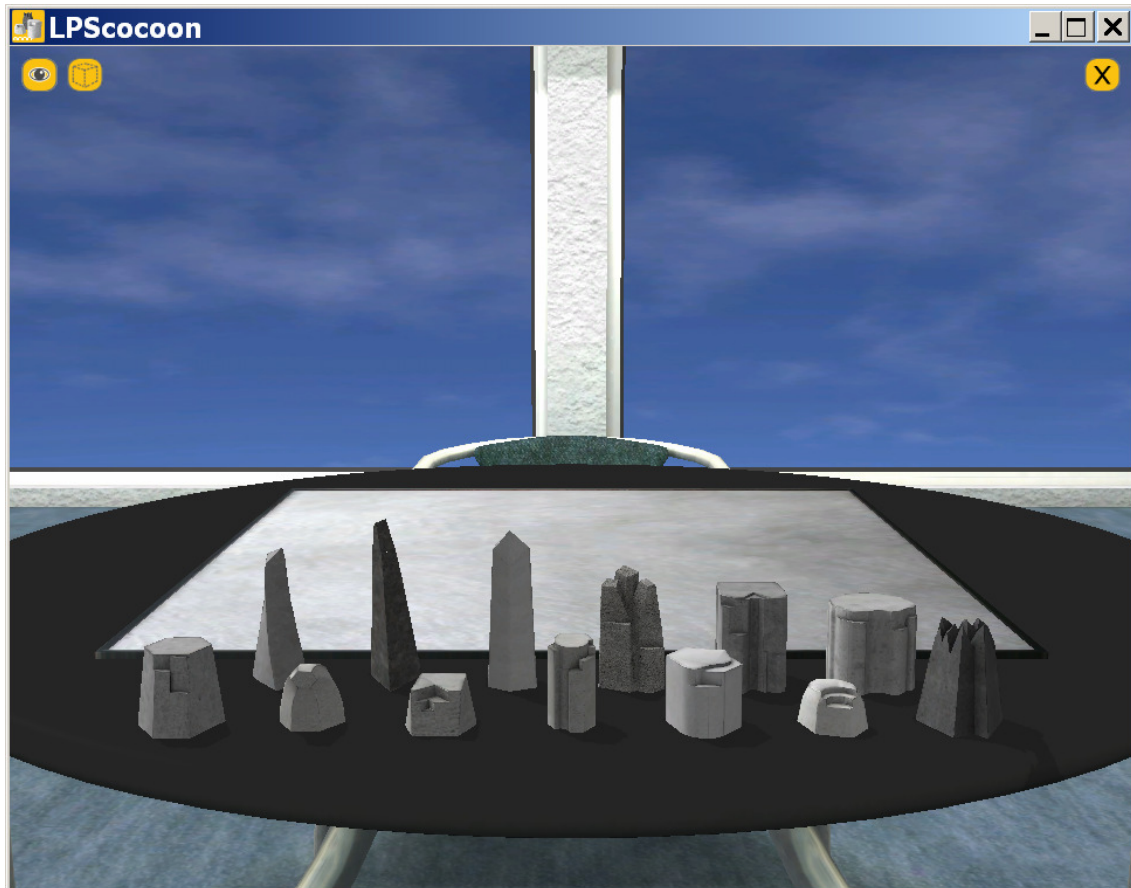
Use the "Resolution" menu to switch to full screen or windowed mode and select the best screen resolution for your monitor.

Click the "Defaults" button to restore the default settings.

Note:

Please note that changes to the detail settings require closing and restarting the program to take effect.

Controls



You can control the program using both mouse and keyboard.

Use the mouse for clicking buttons or changing stones and their positions.

Choose a stone by left-clicking it and keep the left mouse button pressed to move it around by moving the mouse.

If you move a stone close to another stone, you can stack the selected stone on top of the other one.

Choose a stone by left-clicking it and then move the mouse while keeping the right mouse button pressed to rotate the selected stone around its axis.

Click on the "Eye" icon to switch from 1st person to 3rd person perspective.

Click the dotted "Stone" icon to toggle unused stones on the table on and off.

Click the "X" icon to end a session.

Use the arrow keys on your keyboard to change your view of the board.

Click the "Right" or "Left" buttons to move around the table.

You can change your point of view by using the "Up" and "Down" arrow keys.

In the 1st person perspective you use the arrow keys to move the "head" of the stone.

Keep the SHIFT key pressed to double the camera's movement speed.

Use the "Up" and "Down" arrow keys while keeping the "Ctrl" key pressed to get closer to the board or increase your distance.

Alternatively, you can zoom the camera in and out by using the mouse wheel.

Use the "Right" and "Left" arrow keys while keeping the "Ctrl" key pressed to move the camera sideways.

Press the "C" key to centre the camera on the middle of the table again.

Press the "F" key to switch to full screen or windowed mode during the session.

Press the "T" key to toggle the remaining session time on and off.

You can create a screenshot of the table at any time by pressing the "S" key.

Screenshots are stored in the sub folder "Screenshots" in the program's installation folder.

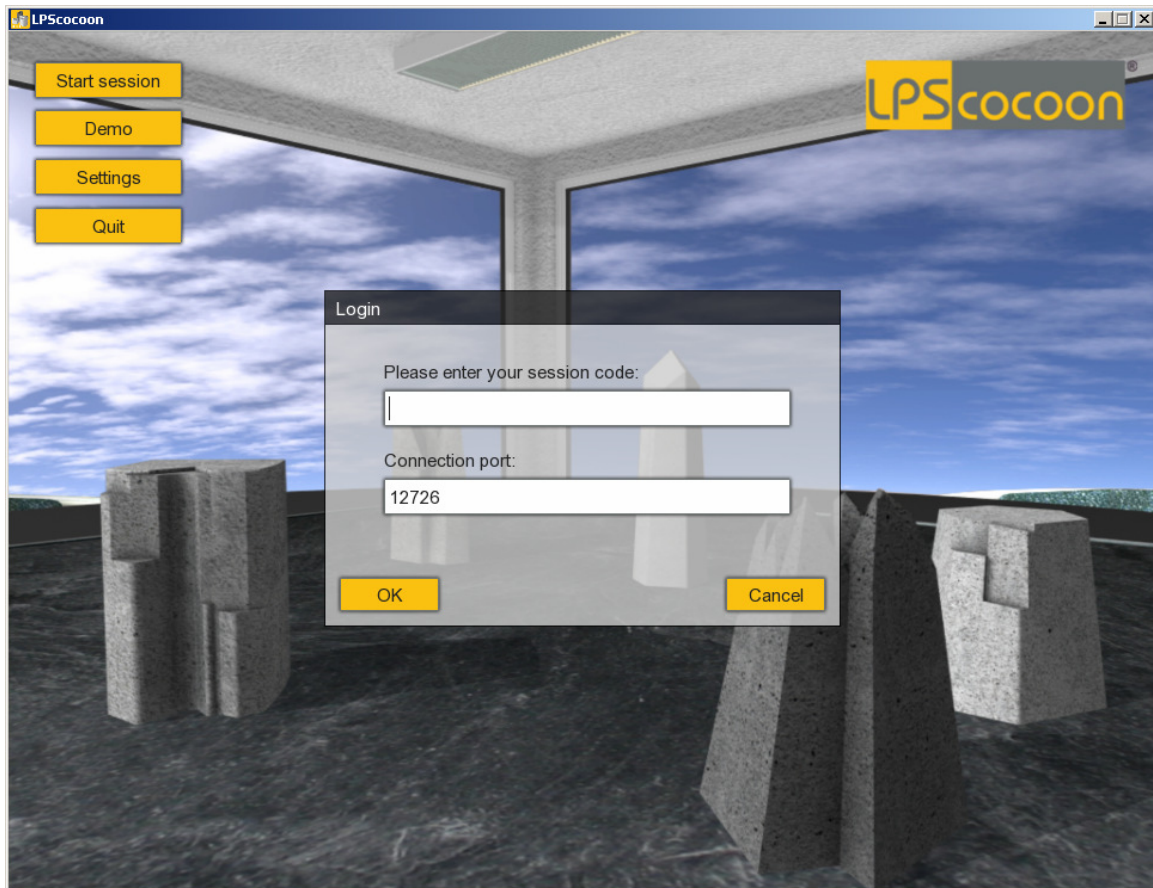
You may access this folder via "Start/All Programs/LPScocon/Screenshots" too.

Screenshots are numbered for each session.

The file names begin with the current session code.

Screenshots you create during a "Demo" session begin with "demo_".

Starting a session



Click the "Start session" button to conduct a session with an authorised counsellor via the internet.

Please enter the session code your counsellor provided you with in the Login prompt, make sure your counsellor and you use the same Port and then click the "OK" button.

Note:

Depending on your connection speed, logging in may take a few seconds.

If the program reports a connection error or a connection can't be created within a few seconds, please check your internet connection and contact your counsellor.

Before starting your first session, please check your internet and firewall settings. You have to be online and authorize LPScocoon to communicate through your firewall.

Wired internet connections (LAN) offer a better performance during online sessions than wireless internet connections (WLAN).